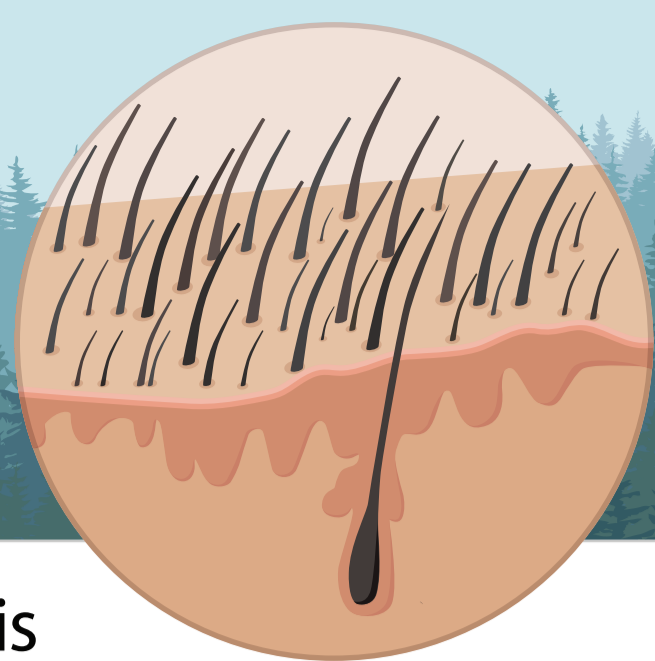


How a Forest of Hair is Restored



Like a forest, a head of hair is continuously in a cycle of growth and loss

Both hair follicles and trees can progressively grow weaker

This is called miniaturization- a process where hair follicles shrink over time.



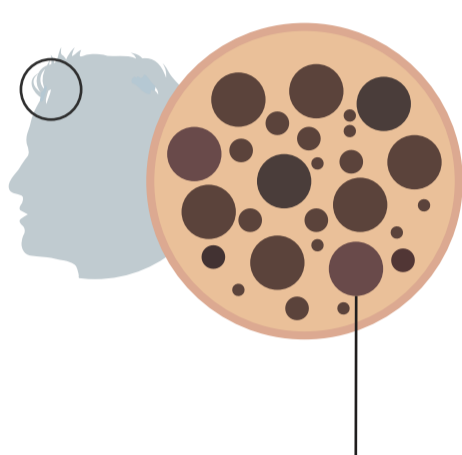
The whole is greater than the sum of its parts

Just as in a forest, a head of hair experiences loss. It is not always readily noticeable because both are perceived as a whole unless the loss becomes greater than the growth.

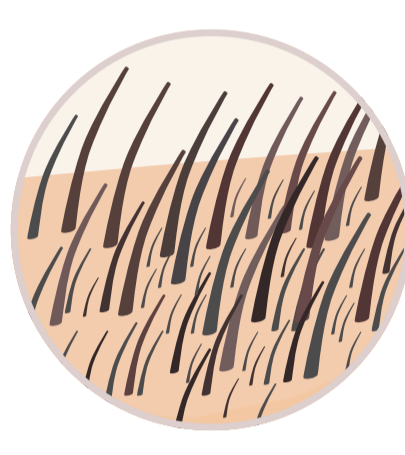


HAIR RESTORATION IS AN ART AND A SCIENCE

Hair is "planted" so it looks natural



Thicker hairs are placed into the areas of loss adding new "trees" in between the older thinner growth.



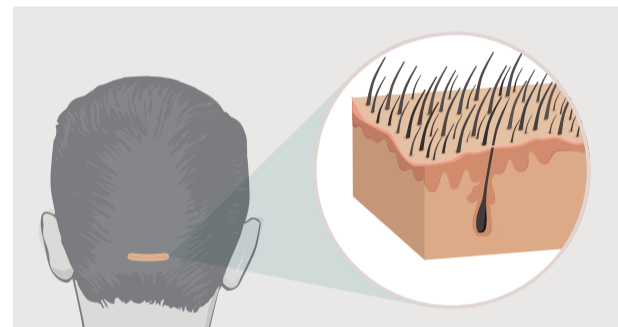
As the new growth fills in it "shades" the sparser areas giving "the forest" of hair a denser appearance overall.

There are two hair replacement methods surgeons use depending on a patient's goals.

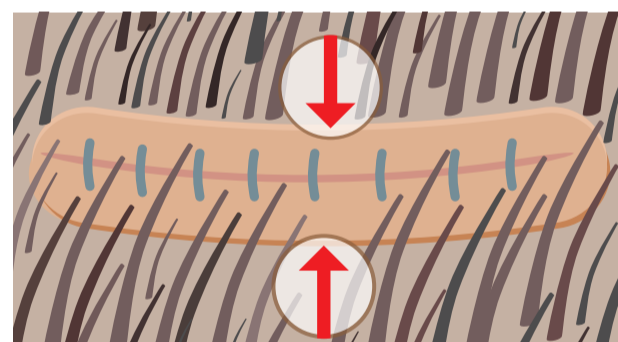
FUT

Traditional Follicular Unit Transplant

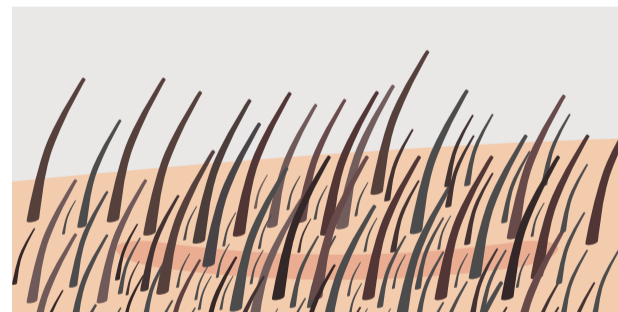
Can wear hair short
(Leaves faint linear scar)



1. Hair on back of head is trimmed and a narrow strip is surgically removed so that hair can grow through and camouflage the scar.



2. The hair from above and below the excision is gently brought together and sutured using advanced surgical closure techniques so some hair grows through the scar and camouflages it.



3. When the wound is healed, a fine scar line is almost completely concealed by the surrounding hair.

FUT RECOVERY: DONOR AREA

7-10 days

Until stitches are removed.

The suture line is immediately covered by the hair above

FUT RECOVERY: RECIPIENT AREA

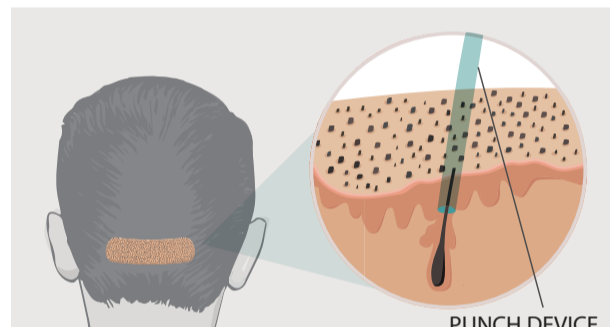
3-7 days

to heal

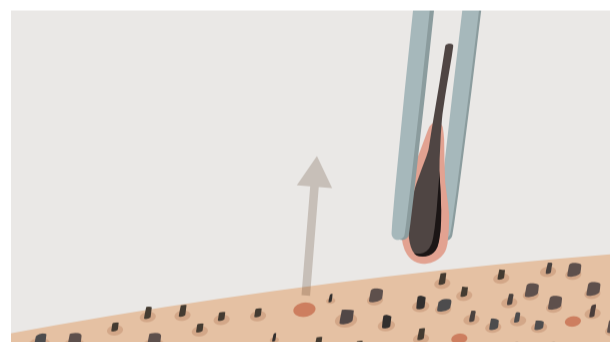
FUE

Follicular Unit Extraction

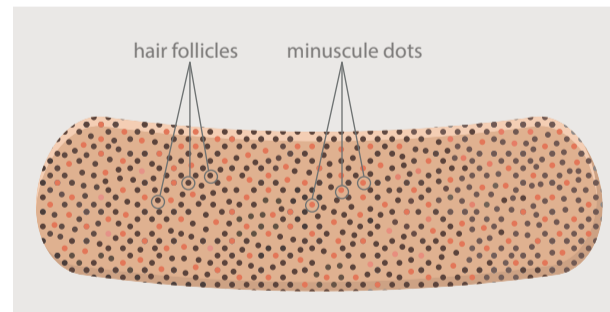
Can wear hair buzzed
(Leaves diffuse pinpoint scarring)



1. Donor area on back of head is shaved to allow hair to be extracted with a tiny punch device.



2. Hair follicles are individually selected with proper spacing to avoid any visible thinning or scarring. Then each follicle is gently removed with a little bit of surrounding tissue.



3. By using tiny .7-1.0mm punches, the minuscule dots that remain are nearly invisible without magnification, thus allowing the patient to cut the hair short ("or buzz cut").

FUE RECOVERY: DONOR AREA

3-7 days

to heal

10 days

For hair to re-grow enough to camouflage area

FUE RECOVERY: RECIPIENT AREA

3-7 days

to heal

RESULTS*

Average grafts per session

FUT **2500**

FUE **2000**

Transection rate

FUT **0-2%**

FUE **0-8%**

Anticipated density (per square centimeter)

FUT **20-50**

FUE **20-50**

*To find out what method is best for you consult with your hair surgeon

TIMELINE FOR GROWTH



Learn more

<http://californiahairsurgeon.com/>